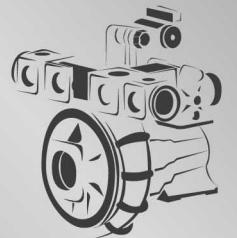




VEHICLE MOUNTED FIRE PUMP MARINE GRADE FIRE PUMP

Works Perfectly...



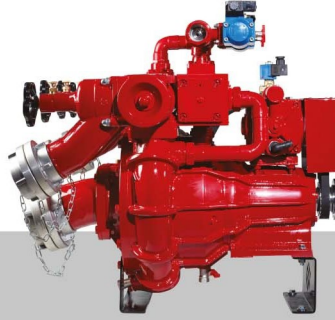
DP2000BZ - DP3000BZ
Normal & High Pressure Pump
for Fire Truck



DUPAMP - FIRE PUMP WORLD

1. ASD OSB Erkunt Cad. No:6
06935 Sincan - Ankara - TURKIYE

Normal & High Pressure Pump for Fire Truck



General Features

- EN – 1028 Certificate
- Bronze or Brass Pump Body Material
- Thermal Expulsion System
- Mechanical Stuffing Impermeability
- Oil Less Automatic Suction System
- High Pressure By-Pass System
- Two Stages Centrifugal Fire Pump
- Two Bronze Impeller Material
- Low-Level Sound
- Bronze Bedding From 2 Points

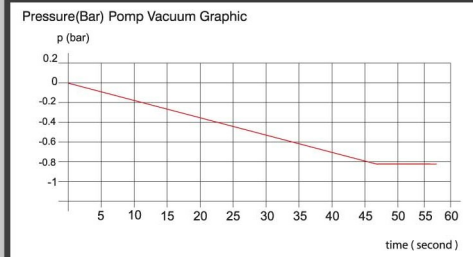
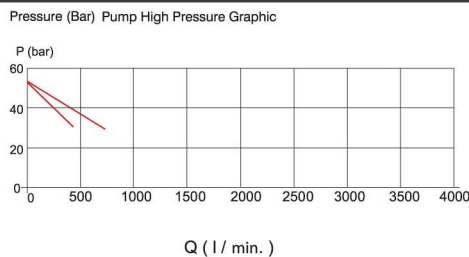
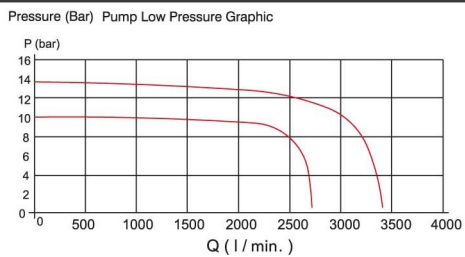
Optionals

- Foam Estimator
- Multi Outlet Collector
- High Pressure Distributor
- Pump Control Panel With Changeable Options
- Changeable Coupling Options

Technical Features

Type	DP2000BZ, DP3000BZ
Rotation	3000 r/min
Norm. Flow Rate	2000 - 3000 lt./min.
High Flow Rate	250 - 400 lt./min.
Norm. Pressure	10 - 15 bar
High Pressure	40 bar
Running Temp.	-15°C / +55°C
Step Number	1 Step
In / Out	4" (optional 5") / 2,5"

Graphic



Dimensions

